

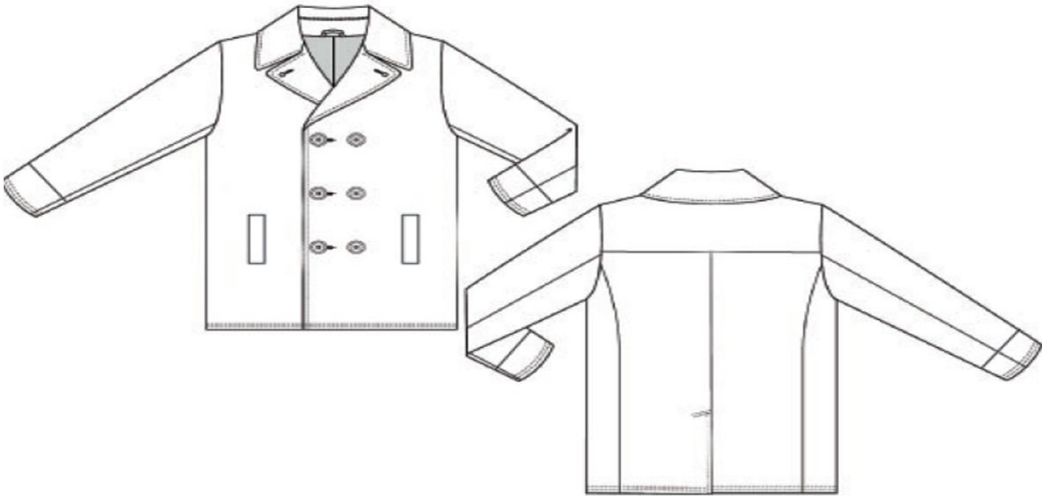
TEXPERTS LIMITED

| | |
|------|----------|
| DATE | 9-Mar-14 |
|------|----------|

| | | | |
|----------------------|--|--------------------|-----------|
| CLIENT | | BUYER: | |
| CUSTOMER'S STYLE # | | FACTORY / COUNTRY | |
| TEXPERT STYLE # | | PO# | |
| PROGRAM: | TEXPERTE SOFT SHOULDER COLLECTION | CODE# | |
| FIT: | TRADITIONAL | SEASON | FALL 2014 |
| GARMENT DESCRIPTION: | MANS LONG COAT WITH BACK VENT, WITH INSIDE LINED | ISSUE DATE: | 9-Mar-14 |
| COAT MODEL | | PAYMENT TERMS: | |
| SIZE RANGES | 14 TO 28 | VENDOR/CONTRACTOR: | |
| HANGING METHOD | FLAT WITH HANGER PACK | DELIVERY DATE: | |

CUT ONE WAY PER SIZE TO AVOID COLOUR SHADING.

FOR COSTING PURPOSES ONLY
FULL LINED WITH 100% POLYESTER



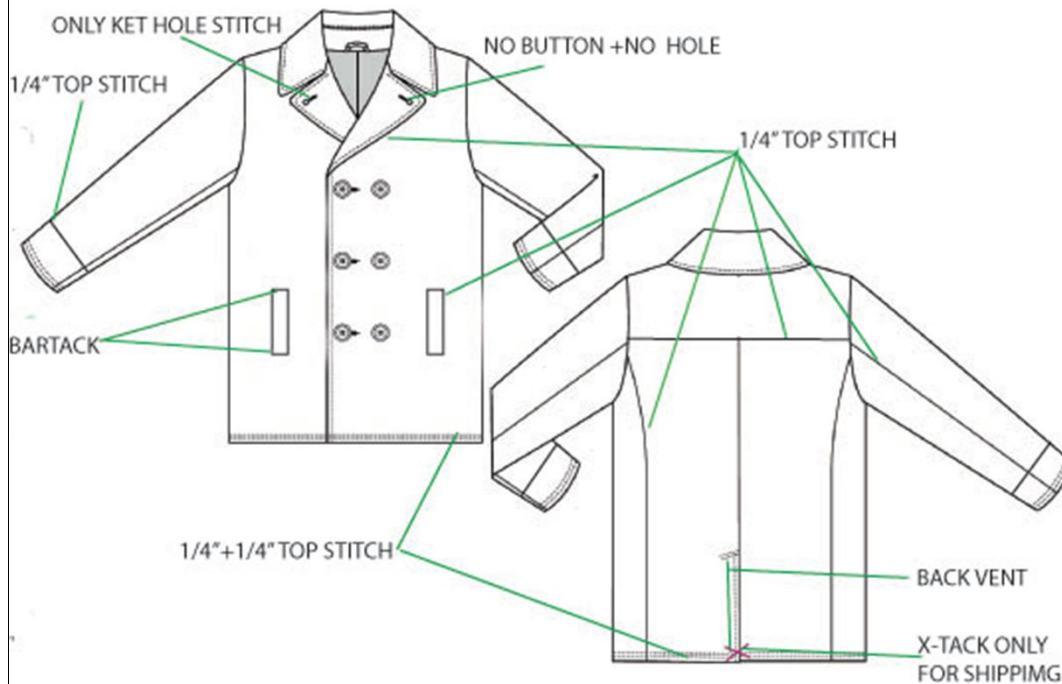
| | | | | |
|-----------------------|---------------------------------------|-------------------|------|---------------------|
| FABRIC DESCRIPTION: | | WASH CODE | #69 | ADDITIONAL COMMENTS |
| FABRIC TEXPERTS CODE: | 340TP | FABRIC ART# | | |
| INT. HS CODE | | COLOR DESCRIPTION | | |
| ITEM NUMBER: | TP 103 | COLOR NAME | CODE | |
| SUPPLIER: | TEXPERTS | | | |
| CONTENT: | WOOL 60%,POLY 25%, VIS 10%, 5% OTHERS | BLACK | 101 | |
| CONSTRUCTION | 40S/2+40D*40S/2+40D | NAVY | 110 | |
| WEIGHT: | 550GSM | | | |
| WIDTH: | 57" | | | |

TEXPERTS LIMITED

DATE

9-Mar-14

| | | | |
|----------------------|--|-------------------|-----------|
| CLIENT | | BUYER: | |
| CUSTOMER'S STYLE # | | FACTORY / COUNTRY | |
| TEXPERT STYLE # | | PO# | |
| PROGRAM: | TEXPERTE SOFT SHOULDER COLLECTION | CODE# | |
| FIT: | TRADITIONAL | SEASON | FALL 2014 |
| GARMENT DESCRIPTION: | MANS LONG COAT WITH BACK VENT, WITH INSIDE LINED | ISSUE DATE: | 9-Mar-14 |



Woven-Long Coat (LILING)

Unlined jacket with Contrast bias cut bound seams.

Woven-Long Coat (COLLAR)

Self collar,fused with light weight Tricot fusing,Clean finished.

1/N 1/4" top stitch around collar.

Woven-Long Coat (FACING)

Clean finished with bound edges in contrast bias taping through to back neck facing.

1/N 1/4" top stitch along outside edge to hemline.

2" wide at shoulder seams ,5" wide at heam line.

Woven-Long Coat (SEAMS)

1/N lock stitch.

Front body seams & shoulder seams Pressed open Bound

Back pannel seam allowances Pressed together, clean finished with contrast Bias binding (As per BOM)

Side seams, Arhole and sleeve seamsare clean finished with serging seams together.

Woven-Long Coat (SLEEVE WITH TURN UP CUFF)

2 PIECES SLEEVE DETAIL WITH VENT.

Clean finished with 3"wide self turn up facing.

Turn under edge 1/Ntopstitch

Woven-Long Coat (HEMLINE)

Heam fused with light weaght tricot, edge bound with contrast bias tape as per BOM.

Blind hem stitch to attached.

Woven-Long Coat (POCKET)

Clean finished in seam pocket.

Upper pocket bag with lining binding fabrication.

Bound pocket bags.

Tacked with lining piece into front facing (See Photo)

TEXPERTS LIMITED

DATE

9-Mar-14

TRIMMINGS

| SEWING ITEMS | ACTUAL | SUBSTITUTE | PACKING ITEMS | ACTUAL | SUBSTITUTE | ADDITIONAL COMMENTS |
|----------------------|----------|------------|---------------|--------|------------|---------------------|
| THREAD (POLYCORE) | | | PRICE TAGS | | | |
| BUTTON | | | HANG TAGS | | | |
| BUTTON | | | HANGER +SIZER | | | |
| SHOULDER PADS | | | | | | |
| FUSING | | | | | | |
| LINING | | | | | | |
| EXTRA BUTTON | | | | | | |
| MAIN LABEL | TEXPERTS | | | | | |
| SIZE TAB | | | | | | |
| CARE LABEL/ POSITION | | | | | | |

FABRIC COMMENTS:

SAMPLE COMMENTS:

Size specification:

Workmen Ship:

TEXPERTS LIMITED

| | |
|-------------|-----------------|
| DATE | 9-Mar-14 |
|-------------|-----------------|

| | | | |
|-----------------------------|---|--------------------------|------------------|
| CLIENT | | BUYER: | |
| CUSTOMER'S STYLE # | | FACTORY / COUNTRY | |
| TEXPERT STYLE # | | PO# | |
| PROGRAM: | TEXPERTE SOFT SHOULDER COLLECTION | CODE# | |
| FIT: | TRADITIONAL | SEASON | FALL 2014 |
| GARMENT DESCRIPTION: | MANS LONG COAT WITH BACK VENT, WITH INSIDE LINED | ISSUE DATE: | 9-Mar-14 |

SPECK NOT FOR PRODUCTION UNTIL FIT APPROVAL

| MEASUREMENT POINTS (FLAT MEAS) | TOL +/- | XS | S | M | L | XL | XXL | GRADING RULE | | |
|---------------------------------|---------|--------|--------|--------|---------|---------|---------|--------------|--|--|
| A-FRT LENGTH FRM HSP | 1/2 | 28 1/4 | 28 1/4 | 28 1/2 | 28 3/4 | 28 3/4 | 28 3/4 | | | |
| B-BK LENGTH FRM HSP | 1/2 | 27 3/4 | 27 3/4 | 28 | 28 1/4 | 28 1/4 | 28 1/4 | | | |
| D- SHOULDER ACROSS | 1/4 | 18 | 18 | 18 1/2 | 19 1/4 | 19 | 19 | | | |
| F ACROSS FRT & BK POSITION (7") | 1/4 | 6 3/4 | 6 3/4 | 7 | 7 1/4 | 7 1/4 | 7 1/4 | | | |
| G-ACROSS FRT (7") FRM HSP | 1/4 | 16 | 16 | 16 1/2 | 17 1/4 | 17 | 17 | | | |
| H-ACROSS BK (7 ") FRM HSP | 1/4 | 17 | 17 | 17 1/2 | 18 1/4 | 18 | 18 | | | |
| J-BK YOKE HEIGHT AT CENTER BACK | 1/4 | 7 5/16 | 7 5/16 | 7 1/2 | 7 11/16 | 7 11/16 | 7 11/16 | | | |
| K-CHEST 1" BELOW ARMHOLE | 1/4 | 21 | 21 | 22 | 23 1/2 | 23 | 23 | | | |
| L-WAIST POSITION FRM HSP | 1/4 | 18 3/4 | 18 3/4 | 19 | 19 1/4 | 19 1/4 | 19 1/4 | | | |
| M-WAIST WIDTH | 1/4 | 20 1/2 | 20 1/2 | 21 1/2 | 23 | 22 1/2 | 22 1/2 | | | |
| N-BOTTOM WIDTH | 1/4 | 20 1/2 | 20 1/2 | 21 1/2 | 23 | 22 1/2 | 22 1/2 | | | |
| O- FRONT ARMHOLE CURVED | 1/4 | 9 1/4 | 9 1/4 | 9 3/4 | 10 3/8 | 10 1/4 | 10 1/4 | | | |
| P- BACK ARMHOLE CURVED | 1/4 | 7 1/8 | 7 1/8 | 7 5/8 | 8 1/4 | 8 1/8 | 8 1/8 | | | |
| Q- ARMHOLE STRAIGHT | 1/4 | 9 7/16 | 9 7/16 | 9 3/4 | 10 1/8 | 10 1/16 | 10 1/16 | | | |
| R-MUSCLE 1" BELOW A/H | 1/4 | 8 1/8 | 8 1/8 | 8 1/2 | 9 | 8 7/8 | 8 7/8 | | | |
| S-ELBOW WIDTH (11") FRM CUFF | 1/4 | 7 | 7 | 7 1/4 | 7 9/16 | 7 1/2 | 7 1/2 | | | |
| T-SLEEVE WIDTH OPENING | 1/4 | 5 7/8 | 5 7/8 | 6 | 6 1/8 | 6 1/8 | 6 1/8 | | | |
| W-SLEEVE LENGTH FR C.B. | 1/2 | 35 1/2 | 35 1/2 | 36 | 36 5/8 | 36 1/2 | 36 1/2 | | | |
| X-SLV HEAD HEIGHT FRM UNDERARM | 1/8 | 6 1/2 | 6 1/2 | 6 3/4 | 7 | 7 | 7 | | | |
| Y-SLEEVE HEAD WIDTH 3" FRM TOP | 1/8 | 4 9/16 | 4 9/16 | 4 3/4 | 4 15/16 | 4 15/16 | 4 15/16 | | | |
| AA-NECK OPENING (S-S) | 1/4 | 8 | 8 | 8 1/4 | 8 1/2 | 8 1/2 | 8 1/2 | | | |
| AC- NECK DROP BK (IML-SEAM) | 1/8 | 11/16 | 11/16 | 3/4 | 13/16 | 13/16 | 13/16 | | | |
| AD- CHEST POCKET FROM HSP | 1/4 | 16 3/4 | 16 3/4 | 17 | 17 1/4 | 17 1/4 | 17 1/4 | | | |
| AF-CHEST POCKET LENGTH | 1/8 | | | 7 1/2 | | | | | | |
| AG-CHEST POCKET WIDTH | 1/8 | | | 2 | | | | | | |
| CUFF TAB HEIGHT | 1/8 | | | 4 1/2 | | | | | | |
| CUFF HEM HEIGHT | 1/8 | | | 1 1/2 | | | | | | |
| BOTTOM HEM HEIGHT | 1/8 | | | 1 1/2 | | | | | | |